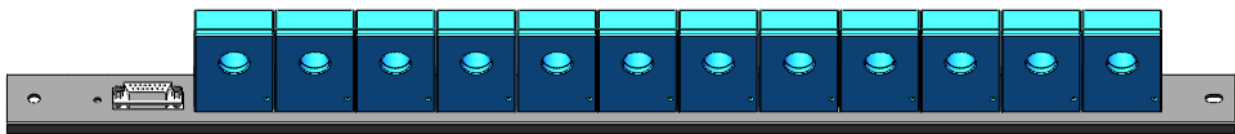
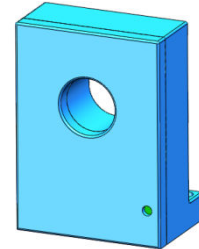


DC Leakage Current Sensor

SCD12



Product description

Features

- SCD series DC leakage current sensor, using the principle of magnetic modulation closed-loop, for isolated measurement of DC milliamper small current.
- The isolation voltage between primary and secondary is greater than 3000VAC.
- Temperature compensation circuit control, zero drift, accurate measurement.
- Perforated input, screw fastening, guide bar installation.
- Overall size(mm): 45(L)×30.6(W)×62(H); Aperture: 17mm
- Comply with UL94-V0 flame retardant rating.

Applications

- Widely used in emerging industries and fields such as electric power, industrial automation, solar photovoltaic, etc.

Implementation standards

- GB/T 7665-2005
- JB/T 25480-2010
- JB/T 11205-2011
- SJ 20790-2000

Certifications



Shenzhen SoCan Technologies Co.,Ltd

SoCan is committed to continuously improving product quality, and the company reserves the right to update its products.

www.szsocan.com

sales@szsocan.com

Technical Parameters

Model Parameters (25°C)	SCD12-				
	10mA	20mA	50mA	100mA	1A
Primary Current I _{PN} (DC)	10mA	20mA	50mA	100mA	1A
Primary Current Max. Peak Value I _{PM} (DC)	±12mA	±24mA	±60mA	±120mA	±1.2A
Output voltage V _{out} @±I _{PN} , R _L =10KΩ	±5V±1%				

Electrical Data

Item	Min.	Typical	Max.	Unit
Input power supply voltage range V _C (±5%) (Remark 1)	±11	±12	±18	V _{DC}
Current consumption I _c	-	±10	-	mA
Withstand resistance R _{INS} @500V DC	1000	-	-	MΩ
Output voltage V _{out} @I _{PN} , R _L =10KΩ, T _A = 25°C	4.950	5.000	5.050	V
Output internal resistance R _{OUT}	-	100	-	Ω
Load Resistance R _L	-	10	-	KΩ
Accuracy X @I _{PN} , T _A = 25°C	-	±1	-	%
Linearity ε _L @R _L =10KΩ, T _A = 25°C	-	±0.5	-	%
Offset voltage V _{OE} @T _A = 25°C	-	±50	-	mV
Temperature coefficient of offset voltage TCV _{OE}	-	±1	±2	mV/°C
Response Time t _D @ 0→I _{PN}	-	500	900	ms
Operating ambient temperature range T _A	-10	25	75	°C
Storage ambient temperature range T _s	-25	25	85	°C
Insulation withstand voltage VD@50Hz, 60s, 0.1mA		3000		V _{AC}
Weight m		70		g

Remark:

Shenzhen SoCan Technologies Co.,Ltd

SoCan is committed to continuously improving product quality, and the company reserves the right to update its products.

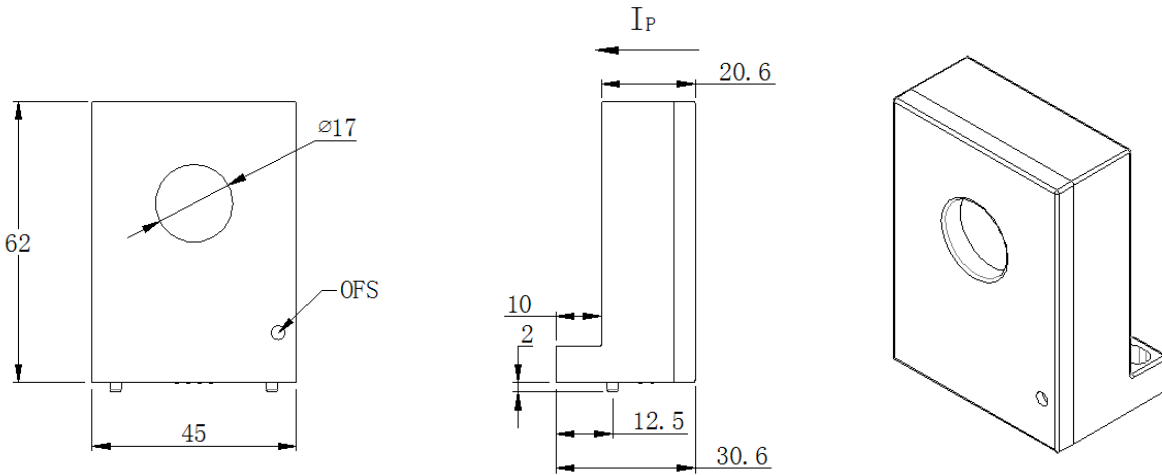
www.szsocan.com
sales@szsocan.com

1. If VC is less than the minimum value, the measurement will be inaccurate. If VC is greater than the maximum value, it may cause permanent failure of the measuring device.

$$2. V_{OUT} = 5.05 * \frac{R_L}{100 + R_L} * \frac{I_P}{I_{PN}} + V_{OE}$$

Dimensions (in mm)

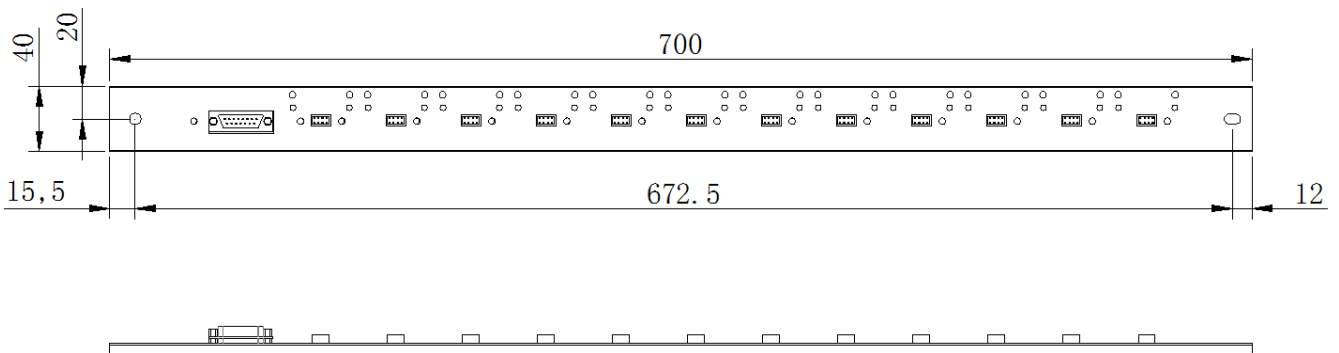
SCD12 dimension:



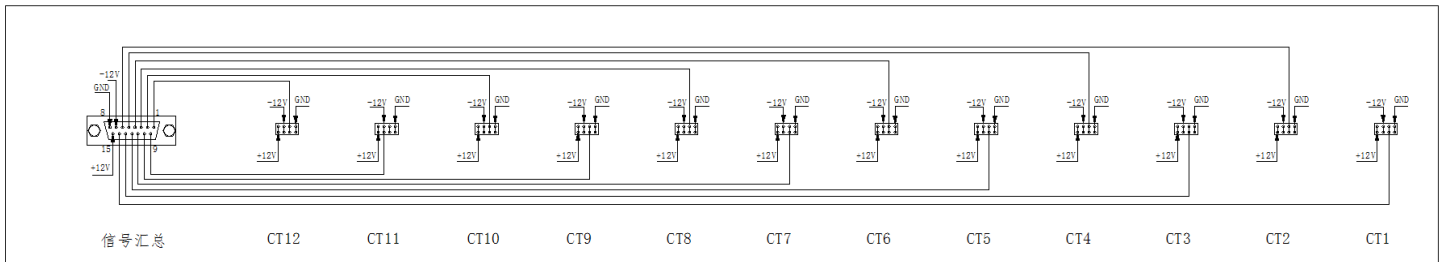
单位: mm

序号	标识	说明
1	+	+12V
2	-	-12V
3	M	Output
4	G	0V

Dimensional drawing of the guide bar:



Wiring diagram:



Notes:

1. Product size error: $\pm 0.5\text{mm}$;
2. Primary aperture: $\phi 17\text{mm}$;
3. Fastening hole: $\circ 5 * 2\text{mm} * 2$;
4. Output terminal: 2.54mm-2*4P, Guide output: DB15 interface;
5. The IP indication direction is the positive direction of the current, and the OFS is the zero adjustment;
6. Incorrect wiring may cause damage to the sensor;
7. The zero voltage of the sensor can be adjusted appropriately according to the needs of users;